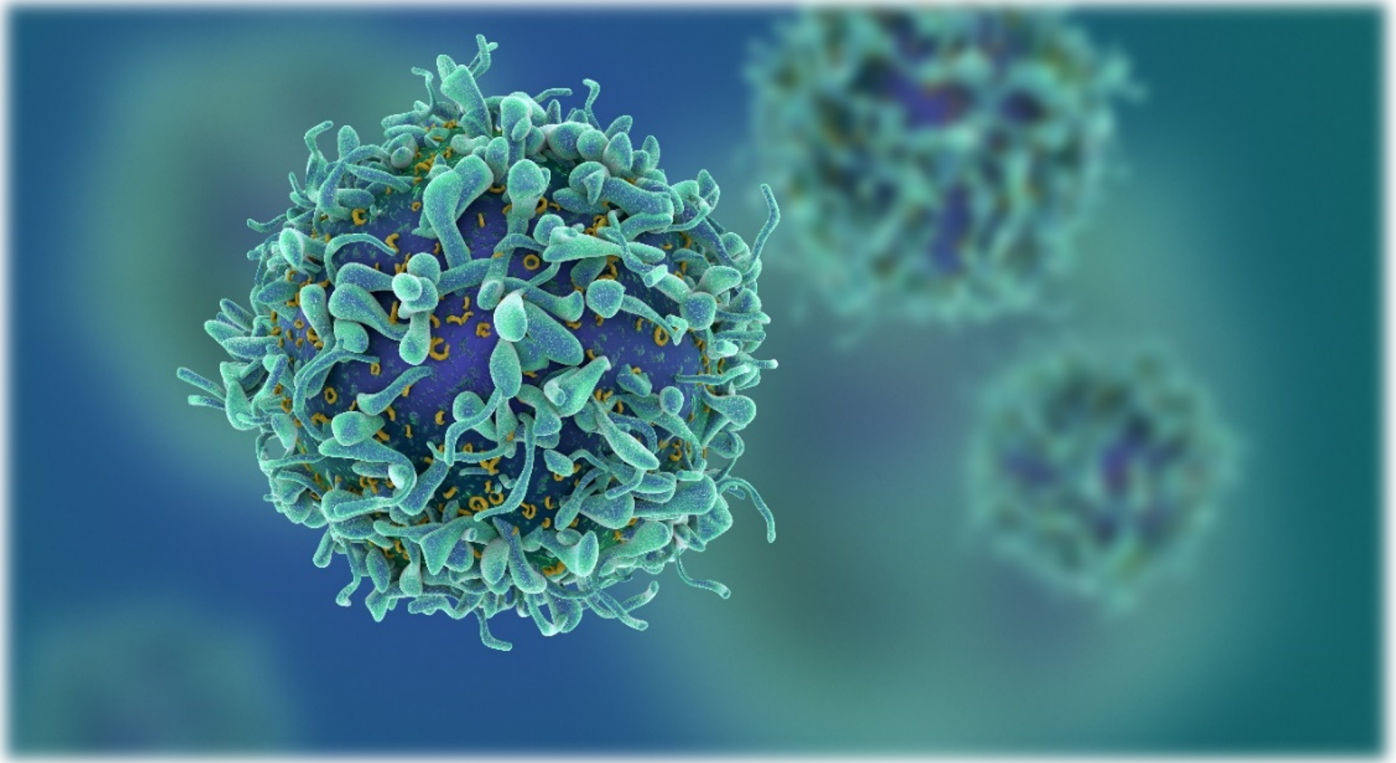


# Frontiers in Cancer Research & Therapy

19-21 May 2021

<https://ki-se.zoom.us/j/61919507728>



## **Organized by the Department of Oncology-Pathology**

Andreas Lundqvist, Charlotte Rolny, Kristina Viktorsson, Ola Larsson, Päivi Östling & Simon Ekman

This **3-day virtual symposium** covers basic, translational and clinical cancer research related to cellular and molecular profiling for precision cancer medicine, immune cells as functional and prognostic tools, and tumor immune landscapes in a clinical setting.

## Wednesday 19 May

### Presentation and award ceremony of the Dan Grandér Memorial Award

- 13.00 *Lars Holmgren and Jonas Grandér*
- 13.15 **Awardee Jiayao Lei**, Department of Laboratory Medicine and Medical Epidemiology and Biostatistics, KI: *Prevention and prognosis of cervical cancer*

### Welcome words

- 14.00 **Lars Holmgren**, Head of Department of Oncology-Pathology

### Session 1 Cellular and molecular profiling for precision cancer medicine

*Introduction by chairs: Andreas Lundqvist and Päivi Östling*

- 14.15 - 14.45 **Berend Snijder**, ETH, Zurich, Switzerland.  
*Personalized cancer treatment discovery by AI-driven Pharmacoscopy*
- 14.45 - 15.15 **Ana Vivancos**, Vall d'Hebron Institute of Oncology, Barcelona, Spain.  
*Evolving landscape of molecular prescreening strategies for oncology early clinical trials*
- 15.15 - 15.45 **Felix Hartmann**, Stanford University, Palo Alto, USA  
*Single-cell proteomics and multiplexed imaging to reveal metabolic regulation of anti-tumor immunity*
- 15.45 - 16.15 **Panel discussion**

## Thursday 20 May

### Session 2 Immune cells as functional and prognostic tool

- 14.00 *Introduction by chairs: Charlotte Rolny and Ola Larsson*
- 14.15 - 14.45 **Karin de Visser**, Netherland Cancer Institute, Amsterdam, Netherlands  
*Dissecting cancer cell-intrinsic mechanisms dictating the immune landscape of metastatic breast cancer*
- 14.45 - 15.15 **Jo Van Ginderachter**, Vrije Universiteit Brussel, Belgium  
*Single-cell profiling of myeloid cells in glioblastoma across species and disease stage reveal macrophage competition and specialization*
- 15.15 - 15.45 **Michele de Palma**, Swiss Federal Institute of Technology, Swiss Institute for Experimental Cancer Research, Lausanne, Switzerland  
*Overcoming microenvironmental resistance to PDL1-PD1 blockade in lung cancer*
- 15.45 - 16.15 **Panel discussion**

## Friday 21 May

### Session 3 Tumor immune landscapes in a clinical setting

- 14.00 *Introduction by chairs: Kristina Viktorsson and Simon Ekman*
- 14.15 - 14.45 **Patrick Micke**, Uppsala University, Uppsala, Sweden  
*Immunoprofiling by mIHC on Non-small cell lung cancer*
- 14.45 - 15.15 **Paolo Ascierto**, Istituto Nazionale Tumori IRCCS Fondazione "G. Pascale", Naples, Italy  
*Malignant melanoma treatment – New combinations to overcome resistance*
- 15.15 - 15.45 **Priscilla Brastianos**, Massachusetts General Hospital, Harvard Medical School, Boston, USA  
*Genetic heterogeneity in brain metastasis - implications for precision medicine*
- 15.45 - 16.15 **Panel discussion**